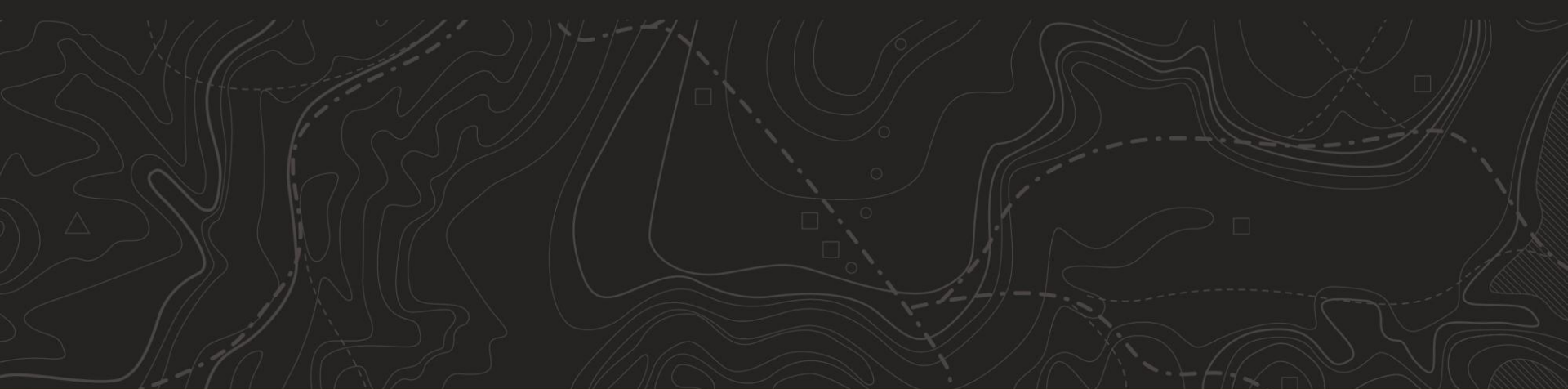


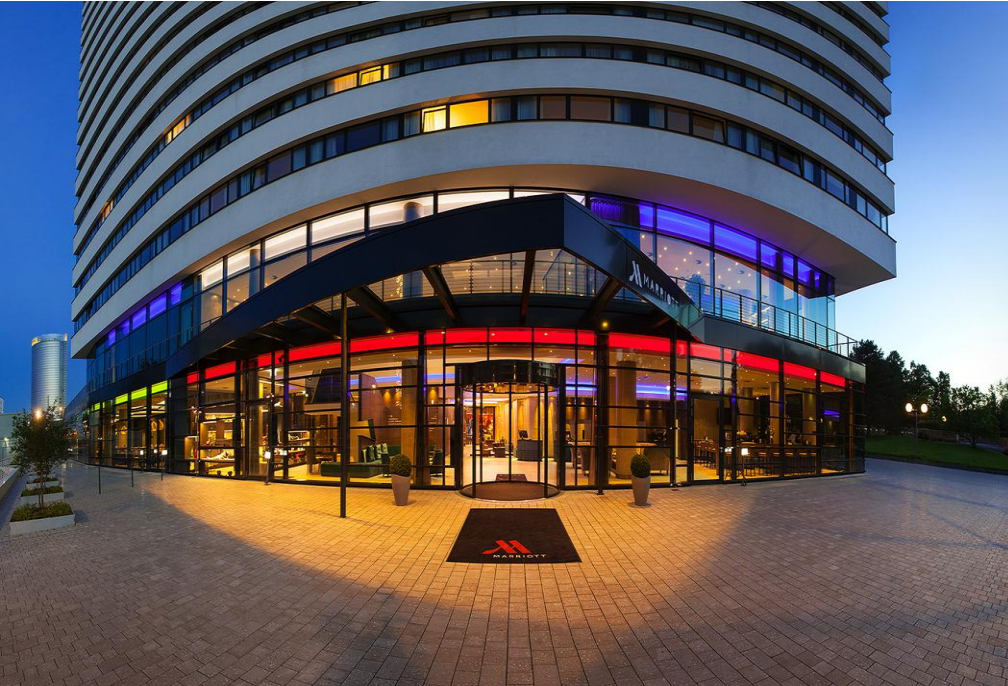


Bonn Marriott World Conference Hotel

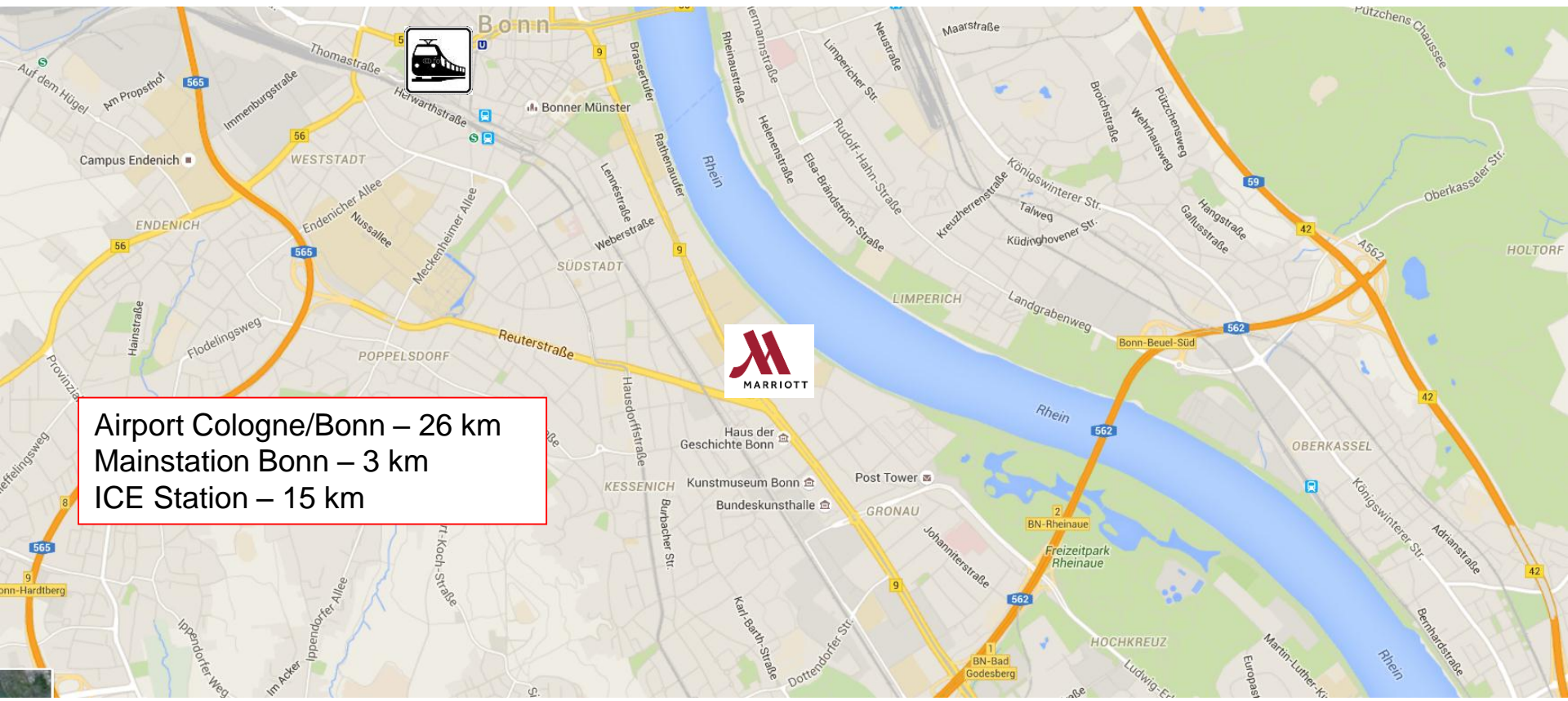




Bonn Marriott World Conference Hotel



Next to the former government district



Airport Cologne/Bonn – 26 km
Mainstation Bonn – 3 km
ICE Station – 15 km

Welcome to the Bonn Marriott World Conference Hotel



Outstanding view

- Next to the government district
- At the river Rhine
- Pier in front of the house
- Direct access to the World Conference Center Bonn
- Entrance to the GOP Variété
- Only 15 minutes to Köln/Bonn airport
- Cologne fair can be reached within 30 minutes
- Subway station – a 5-minute walk away



Rooms & Suites

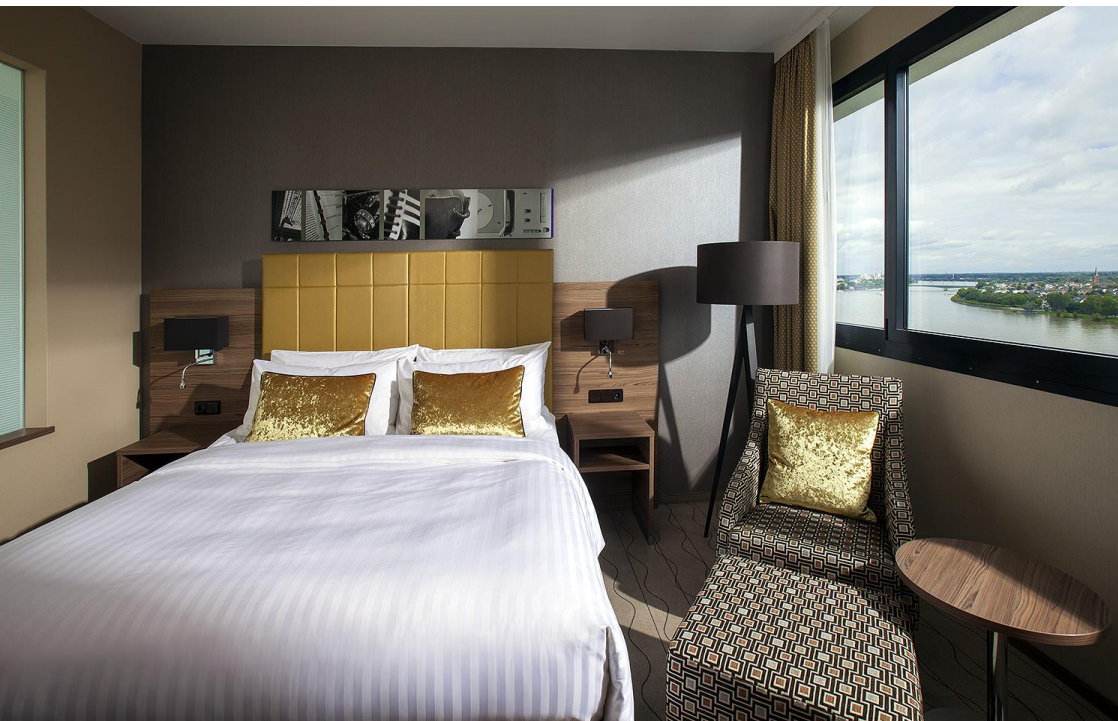
- 336 rooms and suites on 16 floors
 - 167 Standard rooms
 - 93 Deluxe River View rooms
 - 42 Executive rooms*
 - 32 Corner Suites *
 - 2 Presidential Suites *
- * Access to the Executive Lounge



Rooms



Rooms



Corner Suite



Corner Suite



Presidential Suite



Presidential Suite



Our Service



- 24h Room Service
- Lobby shop
- Laundry service
- Business Center
- Underground car parking
- 24h Gym & 1500 m² Spa with indoor pool
- Marriott Rewards Program



Meetings & Events



- Up to 50 persons
- Wasserwerk 77 m²
- Villa Hammerschmidt 77 m²
- Kanzler Bungalow 34 m²
- Palais Schaumburg 34 m²
- 3 Private dining rooms on the 17th floor



Meetings & Events on the 1st floor



Villa Hammerschmidt 77m²



Wasserwerk 77m²



Meetings & Events on the 1st floor



Kanzlerbungalow 34 m²

Palais Schaumburg 34m²



Meetings & Events on the 17th floor



Konrad's 1



Konrad's 2



Meetings & Events on the 17th floor



Konrad's 3



Coffee break



Restaurants & Lounges



- Konrad's Restaurant & Bar
17th floor, 110 seats
- Terrace on the 17th floor,
50 seats
- Restaurant Parlament,
190 seats
- Great-Room-Bar,
40 seats
- Executive Lounge,
40 seats



Konrad's Restaurant & Bar 17 th floor



Konrad's Restaurant & Bar 17 th floor



Executive Lounge

